

☆ Special Recognition Products

Judges Challenge: Bright Ideas

Products receiving this designation offered one or more admirable qualities that stood out among similar entries. However, the judges would like to use this award as an industry call to action; as more companies incorporate LED technology, they must carefully consider the particular attributes of LED lighting and focus on energy efficiency as well as appearance to ensure an excellent customer experience.

Filament Design

The market share of decorative filament lamps continues to grow and represents a significant opportunity to improve the energy efficiency of products with LED technology. *Lighting for Tomorrow* has watched this category grow over the past few years, and supports the successful introduction of quality filament LED lamps into the market.

Meeting Market Needs

As the market penetration of LEDs continues to grow, new products are emerging to replace less efficient lighting technologies of all types. This award highlights products that are newly available using LED technology or representing product types for which the quality of LED performance has increased noticeably.

Senior Friendly Lighting

This award is for products that consider the specific needs of seniors, such as providing low glare and well-distributed light output, portability for use in a number of spaces, and easy adjustments.



Judges Challenge

This was the first LFT year for ceiling fans with integrated lighting or LED light kits. Evaluation focused predominantly on lighting quality and lighting control attributes; the Volta offered the best light design, output, and diffusion. As more ceiling fan companies incorporate LED, they must carefully consider attributes of LED lighting and the impact of the fan on design to enable a positive customer experience.



The most well executed use of LED lighting we've seen in a ceiling fan with the added bonus of sloped ceiling applications.

Volta Emerson

Designers: Mike Sweeney, David Goggans

Designed to impress both indoors and out with its wet-location rating, the 54" Volta ceiling fan allows you to create the contemporary vibe your space is craving with no boundaries. It boasts sleek modern contours wherever it's housed and features a dimmable integrated LED light fixture, a stylish no-light plate and a 4-speed wall control. Available finishes include Platinum, Satin White, and Graphite housing and blades, as well as Barbeque Black housing with natural cherry blades as shown.

CONTACT INFORMATION:

For more information, visit emersonfans.com/voltafan.
www.emersonfans.com



PRODUCT PERFORMANCE:

Light Output (lumens):	2418.8 lm
Efficacy (lumens/watt):	94.86 lm/W
Color Temperature (CCT):	3144K
Color Rendering Index (CRI):	94.9
ENERGY STAR® Qualification:	Expected 2018



Filament Design

A19 LED 5W Spiral Filament Bulb Globe Electric Company (USA) Inc.

Crafted to preserve the look of early 20th century lighting, the Vintage LED Spiral Filament Bulb is fully dimmable and has a lifespan of approximately 15,000 hours. This Steampunk favorite elicits nostalgia in all those who experience its ambient glow, and is best displayed in a clear glass or exposed socket. The elegant design makes it perfect for any indoor or outdoor application; chandeliers, pendants or wall sconces. In addition to being a favorite amongst decorators and interior designers, this bulb features LED technology making it unbeatably long lasting, energy efficient and cost saving.



A unique and delicate lamp that's bending the previous rules of LED filament design.



Meeting Market Needs

G40 LED 6W Vintage Filament Bulb Globe Electric Company (USA) Inc.

Reviving the innovation from the dawn of the electric, the vintage styled bulb trend has only continued to explode in popularity. Combining a beloved design with innovative technology, this Oversized Vintage Bulb incorporates LED technology that will last up to 15,000 hours, and will not only enhance the aesthetic of lighting, but also exponentially increase its energy efficiency. The beauty of these bulbs can be best appreciated in exposed fixtures, as they create a stand-alone decor element that will add a reminiscent glow to any contemporary, rustic or industrial styled locale.



The super bright G40 is a new shape for this market and its bigger size helps it fulfill additional design needs.

PRODUCT PERFORMANCE:

	A19	G40
Light Output (lumens):	410.331 lm	500 lm
Efficacy (lumens/watt):	81.91 lm/W	83.33 lm/W
Color Temperature (CCT):	2913K	2700K
Color Rendering Index (CRI):	83.9	80
ENERGY STAR® Qualification:	Expected 2018	

CONTACT INFORMATION:

Globe Electric Company Inc.
150 Avenue Oneida Montreal, Quebec, Canada H9R 1A8
514-694-0444
www.globe-electric.com
info@globe-electric.com





This LED is a 3-way replacement with higher lumen output than previously seen LED versions, meeting a market need.

SYLVANIA ULTRA LED A21 3-Way LEDVANCE

ENERGY STAR v2.0 certified, the SYLVANIA ULTRA LED 3-WAY A21 Lamp offers three levels of light, providing the effects of dimming without a dimmer switch. This energy-saving direct replacement for a 50/100/150W incandescent lamp delivers 650, 1600 and 2550 lumens but by using only 10, 15 and 25W, and is available in 2700K, 3000K and 5000K. Rated up to 15,000 hours at 70% lumen maintenance, ULTRA LED 3-Way lamps offer years of service and reduced energy and maintenance costs. ULTRA LED 3-Way lamps are environmentally preferred products and allow you to control energy use and light output. A CRI of 80 ensures good color definition. They reduce energy consumption up to 85 percent, lasts up to 15 times longer than incandescent lamps, and are instant-on with full light output.

CONTACT INFORMATION:

LEDVANCE
www.sylvania.com



This senior friendly desk lamp is adjustable, and has low glare and sufficient light output. These attributes make it a particularly great option for those with aging eyes.

epikós PlanLED

Senior Friendly



PlanLED is a minority owned LED lighting company in Federal Way, WA that is making history with our Human Centric Lighting technology; sustainable LED lighting designed with humans in mind. Our latest offering is revolutionary for workplace desktop lighting. Introducing epikós, our flagship color-tunable task light. Its flexing rubber neck has a vertical reach of 39" high and a wingspan stretching an impressive 31.5" wide, which is ideal for positioning behind monitors while front-illuminating a much larger desktop area than is typically found in task lights. Consider the vastly diverse visual needs of 5 generations currently in the workplace. With true to life color rendering of 85-90 CRI, a max output of 2000 Lumens at 20W, and customizable mood settings of Warm (3000 K), Neutral (4500K), and Cool (6500K), epikós is addressing a critical need. It's easy to see why it's the new favorite. 3-Level Color, 3-Level Dimming, and 3-Interval Programming. Who knows, those extra blue light splashes may just enable you to skip that afternoon cup of coffee!

CONTACT INFORMATION:

PlanLED
www.planled.com



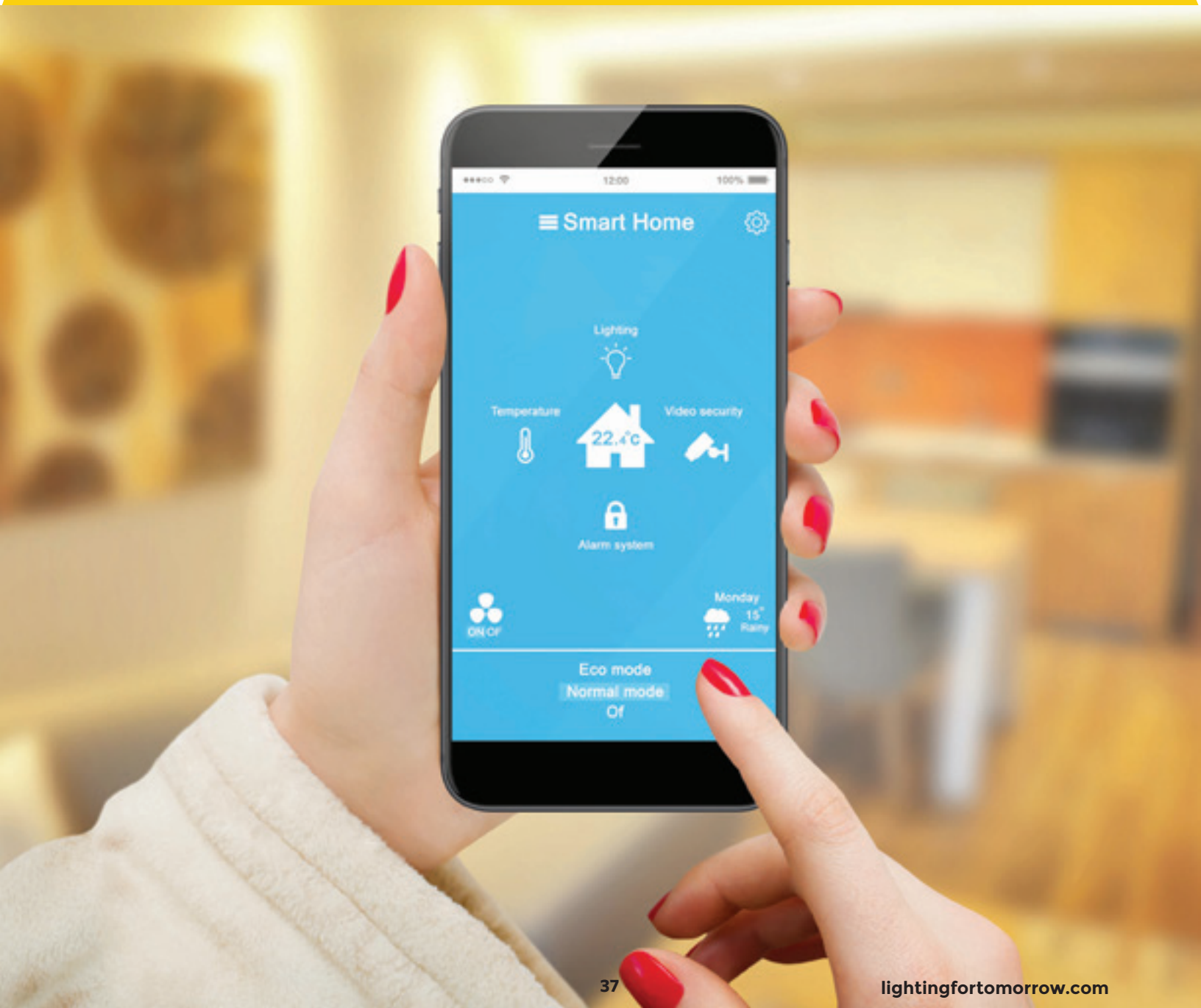
PRODUCT PERFORMANCE:

	LEDVANCE	epikós
Light Output (lumens):	2616 lm	2000 lm
Efficacy (lumens/watt):	110.6 lm/W	92.8 lm/W
Color Temperature (CCT):	2603 K	3000K, 4500K, 6500K
Color Rendering Index (CRI):	81	90
ENERGY STAR® Qualification:	Expected by February 2018	Not eligible

The Next 15 Years of *Lighting for Tomorrow*

Ensuring Lighting Quality in the Future

The emergence of the smart home brings exciting new features and capabilities, including new challenges for lighting and whole house interoperability. Both customers and utilities are moving into a future of energy savings from a systems approach to dimming, integration, and connectivity with other residential products. Beyond energy savings, there are potential opportunities related to comfort, health, convenience and security. *Lighting for Tomorrow* continues to monitor the developments in the connected lighting space, and will consider the types of product criteria that would help yield the most benefit to consumers and efficiency programs alike.



LIGHTING *for* tomorrow

American Lighting Association

Consortium for Energy Efficiency

UL

lightingfortomorrow.com